

## ITDFC GLOBAL COUNCIL ECOSYSTEM

### A Structured Global Platform for Leadership, Industry & Inclusive Growth

The **International Trade & Delegation Federation of Chambers (ITDFC)** operates through a **comprehensive, multi-tier council ecosystem** that brings together **governments, industry leaders, institutions, and emerging professionals** into one unified global platform.

ITDFC is designed with a clear purpose:

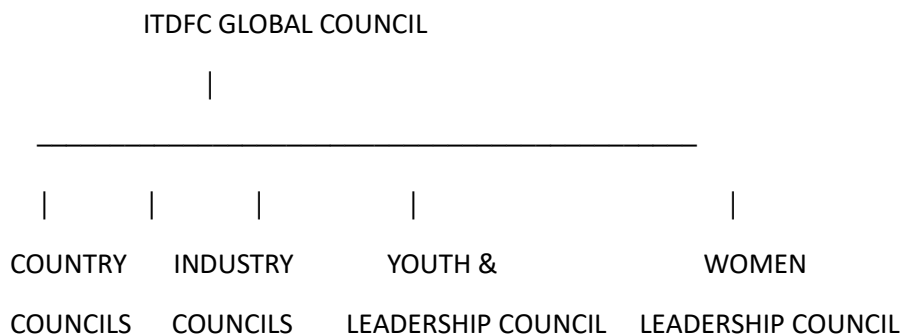
 **To transform global engagement into structured collaboration, strategic partnerships, and measurable economic impact.**

Through its council-based architecture, ITDFC ensures:

- Alignment between **global strategy and national execution**
- Integration of **industry, policy, and investment ecosystems**
- Inclusion of **youth and women in global leadership platforms**
- Delivery of **tangible outcomes across trade, investment, and partnerships**

---

## ITDFC COUNCIL ARCHITECTURE



 **Four Strategic Pillars operating within one integrated global system**

---

### 1. ITDFC GLOBAL COUNCIL

#### Strategic Alignment, Global Engagement & Institutional Credibility

##### Purpose

The Global Council serves as the **central strategic and advisory platform** of ITDFC, ensuring alignment, credibility, and global relevance across all engagements.

---

##### Strategic Role

- Define **global priorities and long-term engagement frameworks**
- Enable **high-level partnerships with governments and institutions**

- Facilitate **policy dialogue and multi-stakeholder collaboration**
  - Provide **strategic guidance across all councils**
  - Strengthen ITDFC's **global institutional positioning**
- 

### What You Gain

- Access to **global leadership and institutional ecosystems**
- Participation in **international forums, summits, and dialogues**
- Opportunities to contribute to **global trade and policy discussions**
- Leadership roles in **delegations and strategic initiatives**
- Recognition within a **prestigious global platform**

👉 *A platform for influence, alignment, and global engagement.*

👉 **Selected members gain recognition, access to global opportunities, and participation in high-level strategic initiatives**

---

### Membership Type

By invitation / nomination only

● [ Nominate / Express Interest ]

---

## 2. ITDFC COUNTRY COUNCILS

### National Execution Platforms with Global Integration

#### Purpose

To drive **trade facilitation, investment promotion, and institutional collaboration** at the country level, aligned with global opportunities.

---

#### Strategic Role

- Build **government–industry–institution partnerships**
- Facilitate **bilateral and multilateral trade engagement**
- Enable **investment and market access opportunities**
- Organize **delegations, forums, and national initiatives**
- Represent ITDFC within the country

---

## What You Gain

- Direct engagement with **ministries, embassies, and trade institutions**
- Participation in **global and country-level delegations**
- Access to **international partnerships and expansion opportunities**
- Recognition as a **national-level representative**

👉 *Bridging national ecosystems with global opportunities.*

👉 **Selected members gain recognition, access to global opportunities, and participation in high-level national and international engagements**

● [ **Join Country Council** ]

---

## 🌱 3. ITDFC GLOBAL INDUSTRY COUNCILS

### Sector-Focused Growth, Investment & Global Collaboration

#### Purpose

To drive **sector-specific collaboration, innovation, and investment** across global industries.

---

#### Core Sectors

Agriculture & Food Systems  
Healthcare & Medical Value Travel (SEHAT)  
Tourism & Hospitality  
Infrastructure & Urban Development  
Technology & Digital Economy  
Energy & Sustainability  
Education & Skill Development  
Finance, Trade & Investment

---

#### Strategic Role

- Identify **high-impact global opportunities**
  - Facilitate **investments, joint ventures, and partnerships**
  - Enable **cross-border sector collaboration**
  - Support **industry-led policy engagement**
- 

## What You Gain

- Access to **global industry networks**

- Participation in **sector-focused delegations and forums**
- Opportunities for **investment and project development**
- Engagement with **policy and regulatory stakeholders**
- Visibility as a **global sector leader**

👉 *Enabling industries to scale globally.*

👉 **Selected members gain recognition, access to global opportunities, and participation in high-level industry initiatives**

● [ **Join Industry Council** ]

---

#### 🚀 **4. ITDFC GLOBAL YOUTH & LEADERSHIP COUNCIL**

##### **Building the Next Generation of Global Leaders**

##### **Purpose**

To develop a **future-ready leadership ecosystem** by integrating young professionals and entrepreneurs into global platforms.

---

##### **Strategic Role**

- Promote **leadership development and global exposure**
  - Support **innovation, startups, and entrepreneurship**
  - Enable participation in **international initiatives and delegations**
  - Build a pipeline of **next-generation global leaders**
- 

##### **What You Gain**

- Access to **mentorship and global networks**
- Participation in **international forums and delegations**
- Leadership opportunities within ITDFC
- Exposure to **global trade and policy ecosystems**

👉 *Shaping leaders for a global future.*

👉 **Selected members gain recognition, access to global opportunities, and participation in international leadership initiatives**

● [ **Join Youth Council** ]

---

## 5. ITDFC GLOBAL WOMEN LEADERSHIP COUNCIL

### Advancing Inclusive Leadership & Global Representation

#### Purpose

To strengthen the role of **women leaders across industries, policy, and entrepreneurship**, ensuring their active participation in global platforms.


---


#### Strategic Role

- Promote **women-led enterprises and leadership participation**
  - Enable **global collaboration among women leaders**
  - Support **inclusive policy dialogue and advocacy**
  - Build a strong **global network of women professionals**
  - Official **ITDFC designation and recognition**
- 

#### What You Gain

- Access to **global women leadership networks**
- Participation in **international delegations and forums**
- Opportunities for **business growth and partnerships**
- Recognition within a **global leadership ecosystem**

 *Driving inclusion. Enabling global influence.*

 **Selected members gain recognition, access to global opportunities, and participation in international women leadership initiatives**

---

 **[ Join Youth Council ]**

---

## ITDFC EXECUTION MODEL

### From Engagement to Measurable Impact

 Dialogue → Delegations → Partnerships → Investment → Impact

This structured pathway ensures:

- Continuous engagement
  - Institutional collaboration
  - Real, measurable outcomes
- 

## MEMBERSHIP & SELECTION FRAMEWORK

### A Curated, Merit-Driven Global Leadership Platform

Membership across all ITDFC Councils represents **credibility, influence, and global responsibility**. It is **not open for general enrollment**, ensuring a **high-caliber ecosystem of leaders from all countries and sectors**.


The framework is designed to build a **balanced, multi-country, multi-sector global network** aligned with real outcomes.

---

## GLOBAL REPRESENTATION STRUCTURE

ITDFC ensures **inclusive yet strategic representation across all geographies worldwide**, including:

- Asia
- Africa
- Europe
- Middle East
- North America
- Latin America
- Oceania

 Every country is positioned as a **strategic node in the global network**, with representation aligned to its **economic strengths, sectoral leadership, and global relevance**.

---

## SECTORAL COVERAGE

Membership spans across **key economic and strategic sectors**, including:

- Agriculture & Food Systems
- Healthcare & Life Sciences

- Trade & Investment
- Technology & Innovation (AI, Digital, Startups)
- Energy (Renewable & Conventional)
- Infrastructure & Urban Development
- Tourism & Hospitality
- Education & Skill Development
- Finance, Banking & FinTech
- Manufacturing & Industry
- Climate & Sustainability
- Logistics & Supply Chain

👉 This ensures **cross-sector collaboration**, enabling **real partnerships, investments, and policy influence**.

---

## SELECTION APPROACH

### A Multi-Channel, Global Identification Process

Participation is considered through:

- **Strategic Nominations**  
From governments, institutions, industry bodies, and existing members
- **Expression of Interest (EOI)**  
Evaluated by the ITDFC Secretariat based on merit and alignment
- **Direct Invitation**  
Extended to distinguished leaders, innovators, and high-impact professionals

👉 Every entry point is designed to maintain **exclusivity with inclusivity across countries**.

---

## EVALUATION PRINCIPLES

### What Defines an ITDFC Member

All candidates are assessed on:

- Proven **leadership and professional credibility**
- Demonstrated **work, achievements, and measurable impact**
- Strong **global outlook and cross-border engagement**
- Deep **sectoral expertise and institutional alignment**
- Ability to contribute to **trade, policy, partnerships, and global initiatives**

👉 Selection is not profile-based — it is **impact-driven and contribution-focused**.

---

## 🌐 COUNCIL-LEVEL STRUCTURING

### Balanced, Strategic & Outcome-Oriented Composition

Each Council is curated to ensure:

- Representation from **multiple countries across all regions**
- Strong **sectoral diversity and domain expertise**
- Inclusion of **both established leaders and emerging voices**
- Alignment with **global priorities and industry needs**

👉 Councils are not symbolic — they are **working platforms for real global engagement**.

---

## ✅ FINAL MEMBERSHIP CONFIRMATION

Membership is formally extended only after:

- Internal **multi-level evaluation and validation**
  - Alignment with **ITDFC's global objectives**
  - Approval by the **ITDFC Secretariat**
- 

## ▼ CORE PRINCIPLE

👉 **Membership is earned through demonstrated work, leadership, and global contribution — not applied for casually.**

---

## 🎯 WHY ITDFC

### A Gateway to Global Influence & Opportunity

Members gain access to:

- 🌐 **Global trade, investment, and policy ecosystems**
- 🤝 **Direct engagement with governments and institutions**
- ✈️ **International delegations, forums, and summits**
- 🔗 **Cross-border partnerships and strategic collaborations**
- 🏆 **Global recognition and leadership positioning**

👉 ITDFC transforms participation into **visibility, credibility, and real opportunity**.

## GLOBAL APPLICATION FORM

### Apply to Join ITDFC Global Councils

---

#### ◆ 1. PERSONAL INFORMATION

- Full Name
  - Gender
  - Date of Birth
  - Nationality
- 

#### 🌐 2. COUNTRY & GEOGRAPHIC REPRESENTATION

(Covering ALL Countries Globally)

**Country of Residence / Representation** (*Dropdown – All Countries*)

Afghanistan | Albania | Algeria | Andorra | Angola | Argentina | Armenia | Australia | Austria | Azerbaijan  
Bahamas | Bahrain | Bangladesh | Barbados | Belarus | Belgium | Belize | Benin | Bhutan | Bolivia  
Bosnia & Herzegovina | Botswana | Brazil | Brunei | Bulgaria | Burkina Faso | Burundi  
Cambodia | Cameroon | Canada | Cape Verde | Central African Republic | Chad | Chile | China | Colombia | Comoros | Congo | Costa Rica | Croatia | Cuba | Cyprus | Czech Republic  
Denmark | Djibouti | Dominica | Dominican Republic  
Ecuador | Egypt | El Salvador | Equatorial Guinea | Eritrea | Estonia | Eswatini | Ethiopia  
Fiji | Finland | France  
Gabon | Gambia | Georgia | Germany | Ghana | Greece | Grenada | Guatemala | Guinea | Guyana  
Haiti | Honduras | Hungary  
Iceland | India | Indonesia | Iran | Iraq | Ireland | Israel | Italy  
Jamaica | Japan | Jordan  
Kazakhstan | Kenya | Kiribati | Kuwait | Kyrgyzstan  
Laos | Latvia | Lebanon | Lesotho | Liberia | Libya | Lithuania | Luxembourg  
Madagascar | Malawi | Malaysia | Maldives | Mali | Malta | Marshall Islands | Mauritania | Mauritius | Mexico | Micronesia | Moldova | Monaco | Mongolia | Montenegro | Morocco | Mozambique  
Myanmar  
Namibia | Nauru | Nepal | Netherlands | New Zealand | Nicaragua | Niger | Nigeria | North Korea | North Macedonia | Norway  
Oman  
Pakistan | Palau | Panama | Papua New Guinea | Paraguay | Peru | Philippines | Poland | Portugal  
Qatar  
Romania | Russia | Rwanda  
Saint Lucia | Samoa | San Marino | Saudi Arabia | Senegal | Serbia | Seychelles | Sierra Leone | Singapore | Slovakia | Slovenia | Solomon Islands | Somalia | South Africa | South Korea | South Sudan | Spain | Sri Lanka | Sudan | Suriname | Sweden | Switzerland | Syria  
Taiwan | Tajikistan | Tanzania | Thailand | Timor-Leste | Togo | Tonga | Tunisia | Turkey |

Turkmenistan

Uganda | Ukraine | United Arab Emirates | United Kingdom | United States | Uruguay | Uzbekistan

Vanuatu | Vatican City | Venezuela | Vietnam

Yemen

Zambia | Zimbabwe

---

### Region Selection

Asia | Africa | Europe | Middle East | North America | Latin America | Oceania

---

### 3. PROFESSIONAL PROFILE

- Organization Name
  - Organization Type (Government / Private / Startup / NGO / Multilateral / Academic)
  - Designation
  - Years of Experience
  - Core Expertise
- 

### 4. SECTORAL CLASSIFICATION

**(Comprehensive Global Sector Coverage)**

**Primary Sector** *(Select One)*

- Agriculture & Food Systems
- Healthcare & Life Sciences
- Trade & Investment
- Technology & Digital Innovation (AI, IT, Startups)
- Energy (Renewable & Conventional)
- Infrastructure & Construction
- Tourism & Hospitality
- Education & Skill Development
- Finance, Banking & FinTech
- Manufacturing & Industrial Development
- Climate Change & Sustainability
- Logistics & Supply Chain
- Media & Communication

- Public Policy & Governance
  - Research & Development
- 

### **Secondary Sector (Optional – Multi-select)**

(Same options as above)

---

### **5. COUNCIL SELECTION**

- Global Council
  - Country Council
  - Industry Council
  - Youth Council
  - Women Council
- 

### **6. PREFERRED ROLE**

- Advisory Member
  - Leadership Role (Chair / Director / Lead)
  - Council Member
  - Sector Expert
- 

### **7. STATEMENT OF INTEREST**

*(100–150 words)*

Explain:

- Your global vision
  - Sector contribution
  - Why you want to join ITDFC
- 

### **8. VALUE CONTRIBUTION**

What will you bring to ITDFC?

- Strategic Expertise
- Institutional Network
- Investment Capability

- Policy Influence
  - Market Access
  - Innovation / Technology
- 

## 9. INTERNATIONAL EXPERIENCE

- Yes / No  
If Yes:
  - Countries worked with
  - Global partnerships
  - Delegations / projects
- 

## 10. ENGAGEMENT INTEREST

- International Delegations
  - Policy & Advisory
  - Investment & Trade
  - Partnerships & Collaborations
  - Events & Summits
- 

## 11. SUPPORTING DOCUMENTS

- LinkedIn Profile
  - CV / Profile
  - Organization Profile
  - Photograph Upload
- 

## 12. DECLARATION

- I confirm that the information provided is accurate
  - I agree to ITDFC's selection and review process
- 

## [ SUBMIT APPLICATION ]

---

## FINAL IMPACT LINE

👉 **“Represent your country. Lead your sector. Shape global collaboration with ITDFC.”**